

## Weigh Module



### FEATURES

- Capacity: 50kN (11.2Klb)
- Simple Installation
- Moveable load point
- Withstands very high lateral forces
- Extremely accurate and rugged
- ATEX and OIML approval

### DESCRIPTION

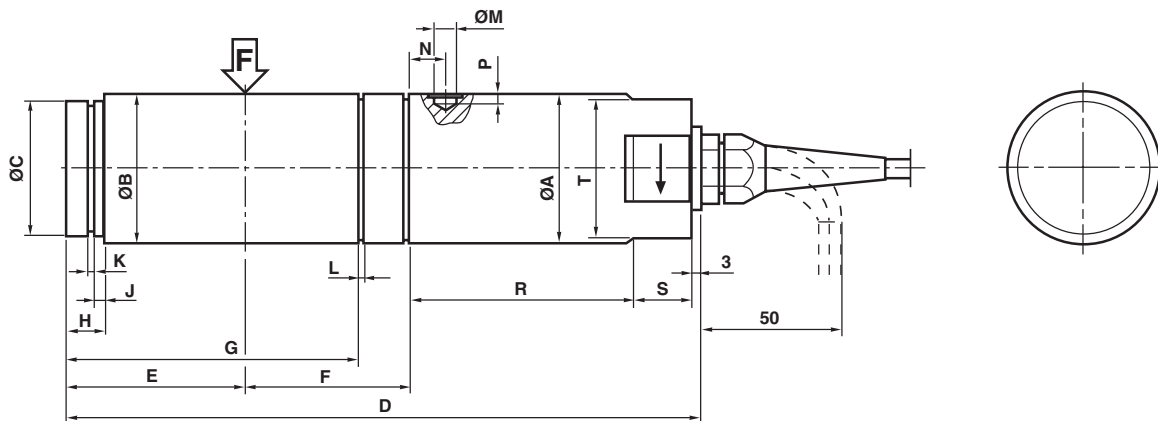
The KIS-11 load cell has several features that clearly distinguish it from other load cells. KIS-11 cells are easy to install and extremely accurate, even when subjected to dynamic process forces and severe environmental conditions.

All KIS load cells can be ATEX certified for use in explosive atmospheres.

### APPLICATIONS

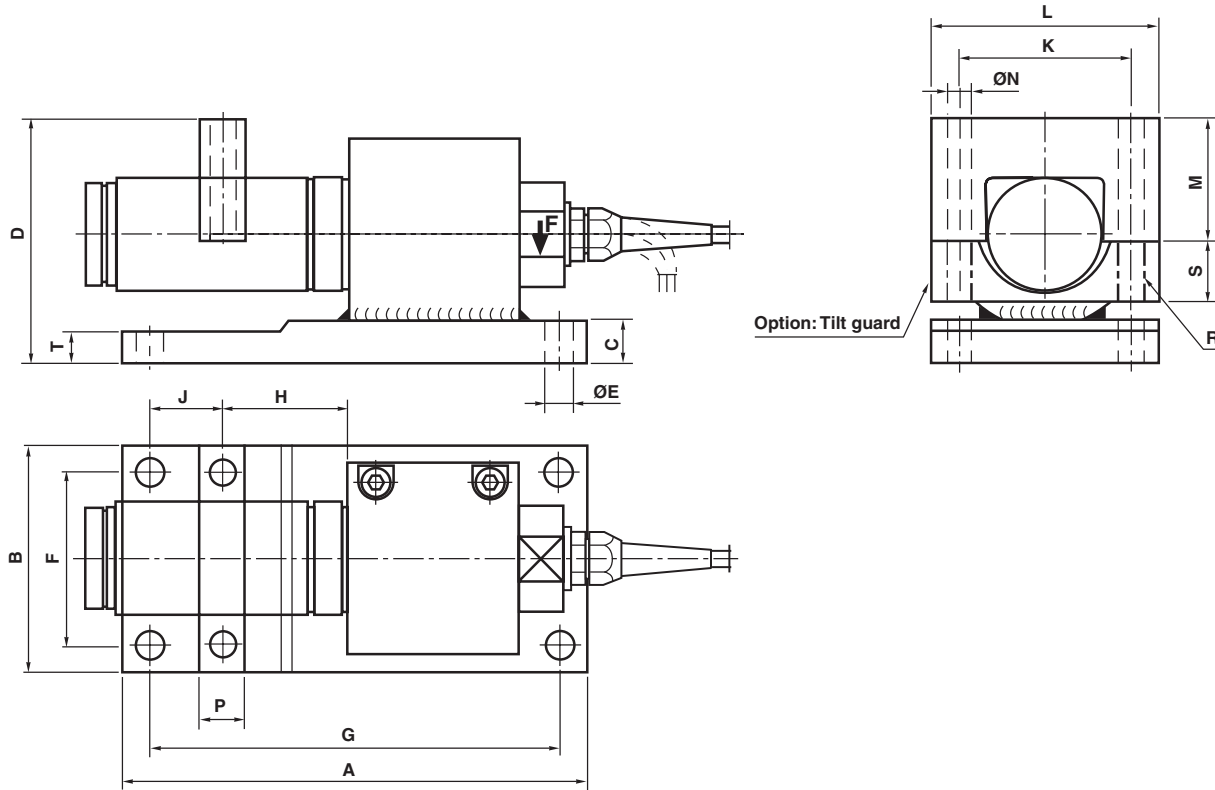
- Batch/blend/mix systems
- Reactor vessels
- Quality-critical process weighing
- Precision force measurement

### OUTLINE DIMENSIONS



RANGE kN	ØA	ØB	ØC	D	E	F	G	H	J	K	L	ØM	N	P	R	S	T
50	77	75	70	291	93	65	141.3	12	5	2.65	2.65	9.1	14	7	110	20	60

**OUTLINE DIMENSIONS** cont.



RANGE kN	A	B	C	D	ØE	F	G	H	J	K	L	M	ØN	P	T	R	S
50	280	150	30	152	16	115	245	65	45.5	115	150	72	18	30	30	M16	43

**SPECIFICATIONS**

<b>Rated load (R.L.)</b>		50	kN
<b>Combined error (terminal)</b>		±0.02	% of R.O.
<b>Repeatability</b>		0.01	% of R.O.
<b>Overload</b>	<b>safe</b>	100*	% of R.L.
	<b>ultimate</b>	200*	% of R.L.
<b>Sideload</b>	<b>safe</b>	100*	% of R.L.
	<b>ultimate</b>	200*	% of R.L.
<b>Input voltage</b>	<b>recommended</b>	10	V DC or AC
	<b>maximum</b>	18	V DC or AC
<b>Input resistance</b>		350±3	ohm
<b>Output resistance</b>		350±0.5	ohm
<b>Rated output (R.O.)</b>		1.020	mV/V
<b>Tolerance of R.O.</b>		±0.1	% of R.O.
<b>Zero balance</b>		±1	% of R.O.
<b>Tolerance of shunt calibration values</b>		±0.1	% of value**
<b>Creep at R.L. after 30 minutes</b>		±0.04	% of R.L.
<b>Temperature range</b>		-40 to +80 (+100)***	°C
<b>Temperature effect (-10°C to +50°C)</b>	<b>on output</b>	±0.0010	% of output/°C
	<b>on zero balance</b>	±0.0014	% of R.O./°C
<b>Insulation resistance at 200V DC</b>		>4	Gohm
<b>Material: Load Cell</b>		Stainless steel	
<b>Material: Bracket and Yoke</b>		Yellow chromate steel****	
<b>Electrical connection</b>		10m shielded four conductor cable	
<b>Degree of protection</b>		IP 67	
* Referring to recommended loading case		ATEX certified versions for use in explosive atmospheres are available: II 1GD	
** See calibration sheet of the load cell			
*** -40 to +100°C on demand			
**** Stainless steel on demand			
		Approved in accordance with OIML International Recommendations R 60 edition 1991, C3.	

## Disclaimer

All product specifications and data are subject to change without notice.

Vishay Precision Group, Inc., its affiliates, agents, and employees, and all persons acting on its or their behalf (collectively, "Vishay Precision Group"), disclaim any and all liability for any errors, inaccuracies or incompleteness contained herein or in any other disclosure relating to any product.

Vishay Precision Group disclaims any and all liability arising out of the use or application of any product described herein or of any information provided herein to the maximum extent permitted by law. The product specifications do not expand or otherwise modify Vishay Precision Group's terms and conditions of purchase, including but not limited to the warranty expressed therein, which apply to these products.

No license, express or implied, by estoppel or otherwise, to any intellectual property rights is granted by this document or by any conduct of Vishay Precision Group.

The products shown herein are not designed for use in medical, life-saving, or life-sustaining applications unless otherwise expressly indicated. Customers using or selling Vishay Precision Group products not expressly indicated for use in such applications do so entirely at their own risk and agree to fully indemnify Vishay Precision Group for any damages arising or resulting from such use or sale. Please contact authorized Vishay Precision Group personnel to obtain written terms and conditions regarding products designed for such applications.

Product names and markings noted herein may be trademarks of their respective owners.